

★ ★ Tuesday, January 27, 1976 THE KANSAS CITY TIMES 15

Scouts Choose Tough Leader in Bush

By Steve Marantz
A Member of the Sports Staff

Eddie Bush, who has been likened to a grizzly bear but who in fact may be much tougher, was named yesterday as coach of the Scouts.

It came as little surprise when Sid Abel, Scouts' general manager, presented Bush, who it is presumed took pen in paw upon arriving here yesterday and signed a contract for the remainder of the season.

Gruff but good-natured, the long-time coach of amateurs said he was happy to rejoin Abel and Baz Bastien, assistant general manager, and that he expected the Scouts to respond to his hard-nosed guidance. "The players are looking for discipline," said Bush. Bush was one of the first candidates considered by the Scouts to replace Bep Guidolin, who resigned last Wednesday. It was apparent Saturday that a decision had been reached when Bush resigned as coach of the Junior B amateur team in Collingwood, Ontario, and announced he would join Abel and the team in Chicago.

A snowstorm stranded Bush in Toronto and prevented him from meeting with Abel until yesterday when he arrived here. In Abel, Bush rejoins a teammate from the Detroit Red Wings of 1941-42, his lone season in the National Hockey League.

In the 1966-67 season Bastien, then general manager of the Pittsburgh Hornets of the American Hockey League, hired Bush as his coach. It was Bastien who first suggested Bush as Guidolin's replacement. "He did a terrific job in Pittsburgh," said Bastien yesterday. "He runs a hell of a practice. He likes to have his team in shape."

Bush, a native of Collingwood, has coached on every level except the N.H.L. His amateur stops include Guelph, Ontario; Hamilton, Ontario; and Kitchner, Ontario, in addition to Collingwood. On the pro level he has

coached minor league teams in Memphis, Quebec City, Que., and Richmond, Va.

Notable among the hundreds of players he has coached are Rod Gilbert, Jean Ratelle, Pit Martin and Pete Mahovlich, all standouts in the N.H.L. "I've coached for or against half the players in the N.H.L.," said Bush.

As a coach Bush is known as a fundamentalist who demands that his players adhere to his system. He followed that reasoning in coaching Hamilton to the Memorial Cup—the Canadian am-

ateur championship—and his amateur teams failed to make the play-offs only three times.

"We wanted someone strong in the fundamentals of hockey," said Abel. "And we wanted a winner. Eddie Bush is definitely the guy who fills those qualifications. He's tough, he's colorful and he can organize a good hockey club as fast as anyone."

"After the season we'll evaluate the situation and make a decision for the future. But I certainly expect that Eddie Bush will figure very strongly in that decision."

Bush's playing career, as a defenseman, began in 1938 and ended in 1950, with four years taken up by a hitch in the Royal Canadian Air Force during World War II. His minor league experience included two months with Kansas City of the American Hockey Association in 1938-39.

In 1941-42 he played 18 games with the Red Wings and added 12 more in the play-offs. Amazingly enough, he scored a goal and four assists in one play-off game against Toronto, setting a play-off record for most points in one

game by a defenseman that still stands.

In taking over the Scouts, losers of their last 12 games, Bush offers no miracle panacea or promise of immediate success.

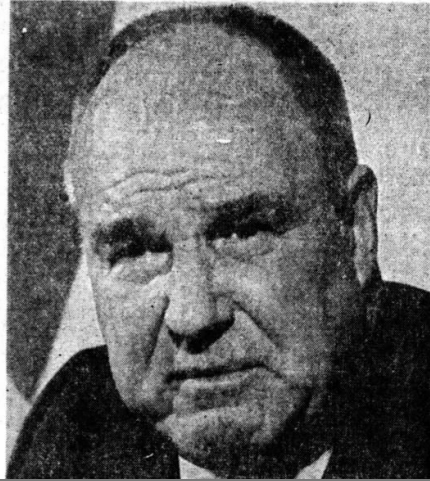
"I have to see them on ice and meet the players," said Bush. "It would be foolish to make changes without seeing them. I'll have to wait two or three games."

Bush said his interim status with the Scouts was of little immediate significance.

"You cross the bridge as you come to it," he said. "I thought I'd see if I can find something out about the Scouts. We'll see what happens. We'll see if I enjoy them and they enjoy me."

"This team is maybe two or three players away (from play-off contention). We've got a hell of a hometown coming and there's no telling what can happen."

Bush and his wife, Mabel Irene have a daughter, Sandra Louise, 32 and a son, Eddie, Jr., 28.



Goodyear Tires At Low, Low Prices

**All-Weather 78
polyester cord tire
provides a thrifty fit
for American cars...
and budgets.**

\$16	\$21	\$23	\$25	\$26
<small>B78-13 blackwall</small>	<small>E78-14 blackwall</small>	<small>F78-14 blackwall</small>	<small>G78-14 blackwall</small>	<small>G78-15 blackwall</small>